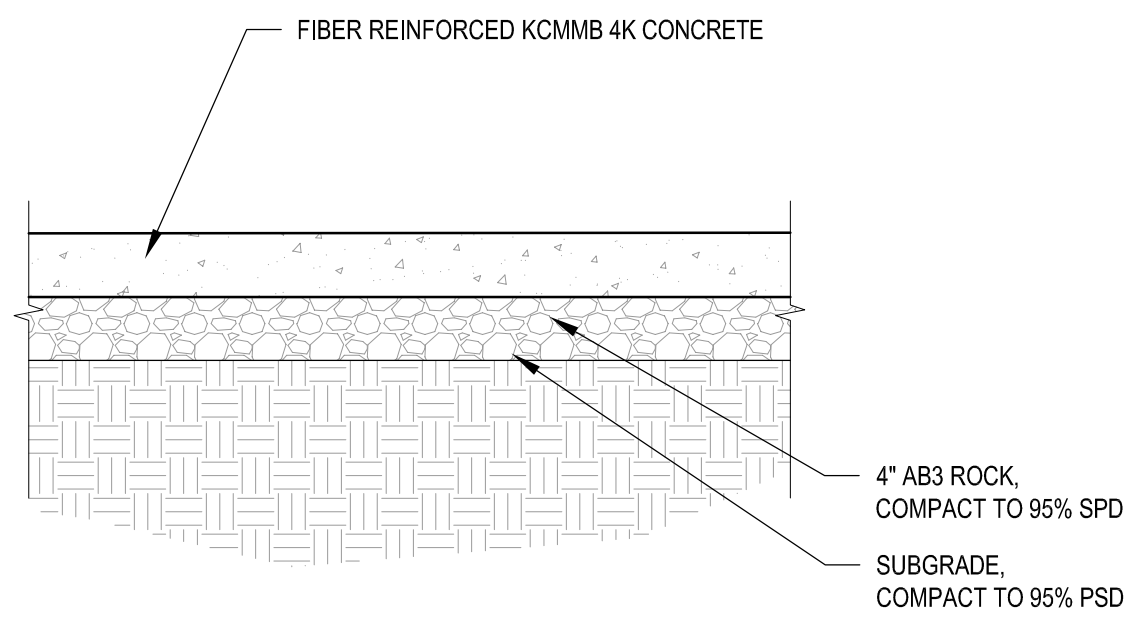


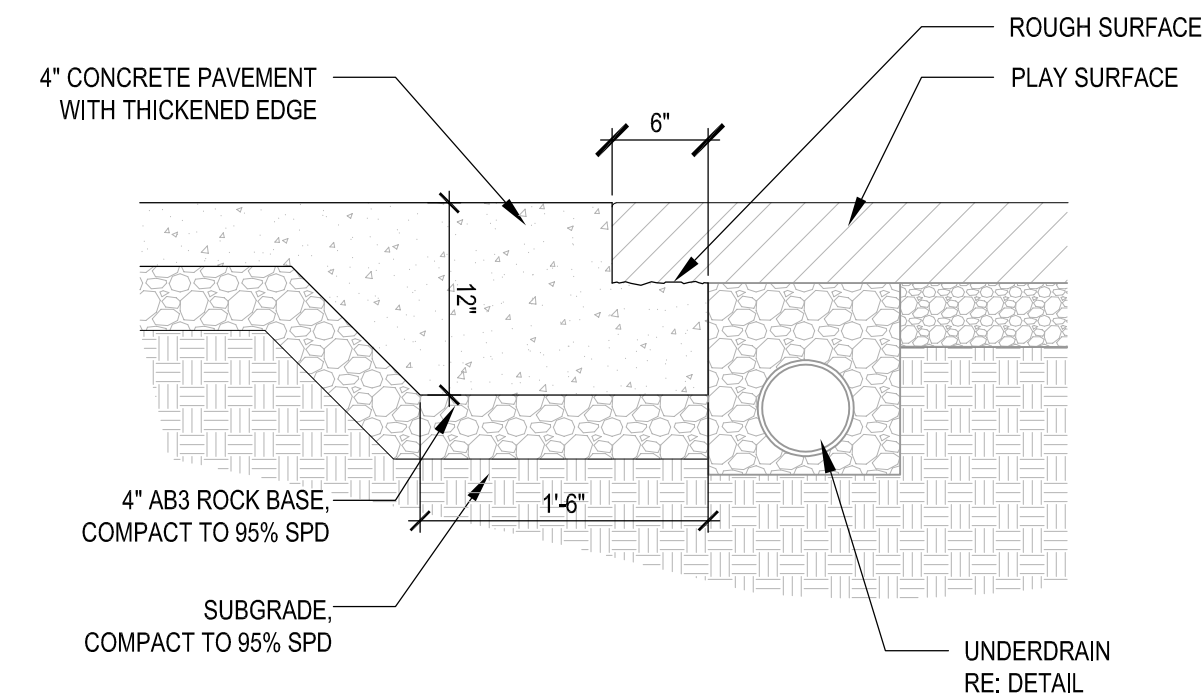
NOTES:

1. CONCRETE SIDEWALK TO HAVE MEDIUM BROOM FINISH PERPENDICULAR TO THE CENTERLINE OF THE SIDEWALK.
2. EXPANSION JOINTS SHALL OCCUR AT 15'-0" INTERVALS UNLESS OTHERWISE NOTED.
3. CONTRACTION JOINTS SHALL OCCUR AT 6'-0" INTERVALS UNLESS OTHERWISE NOTED.
4. REFER TO SPECIFICATION 2200 PAVING SECTION 2208 PORTLAND CEMENT CONCRETE PAVEMENT.

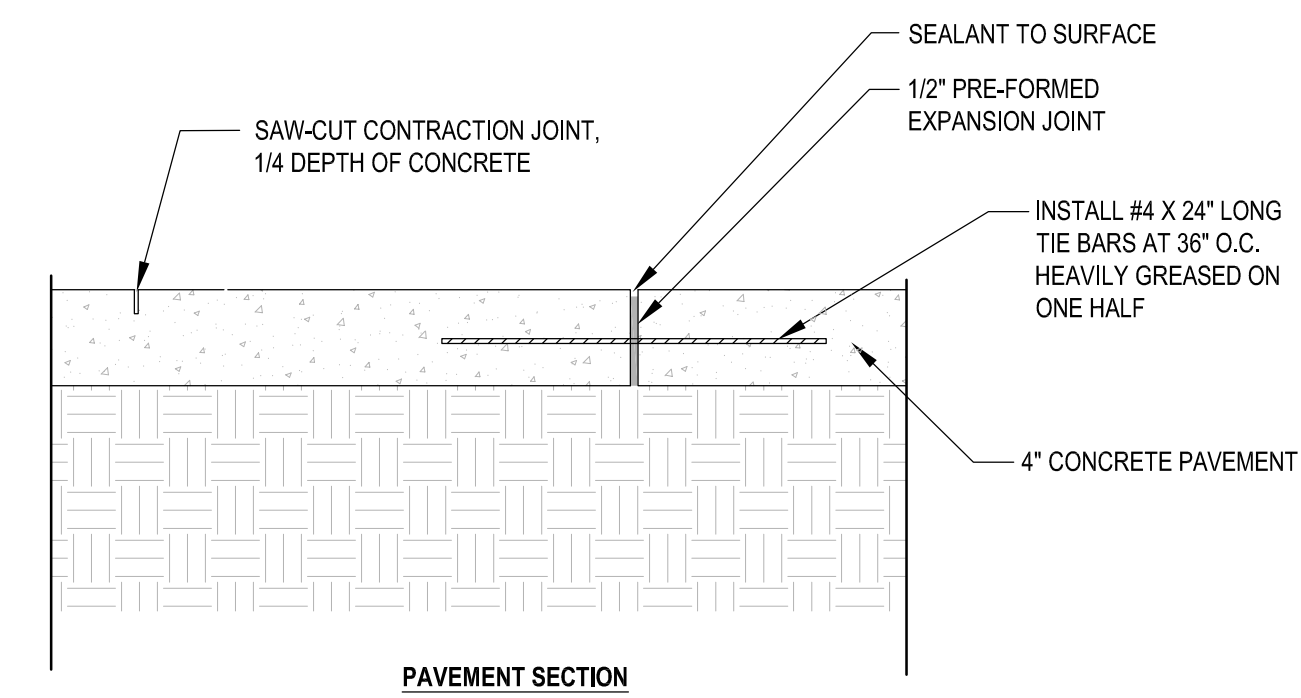


CONCRETE PAVEMENT 01
N.T.S.

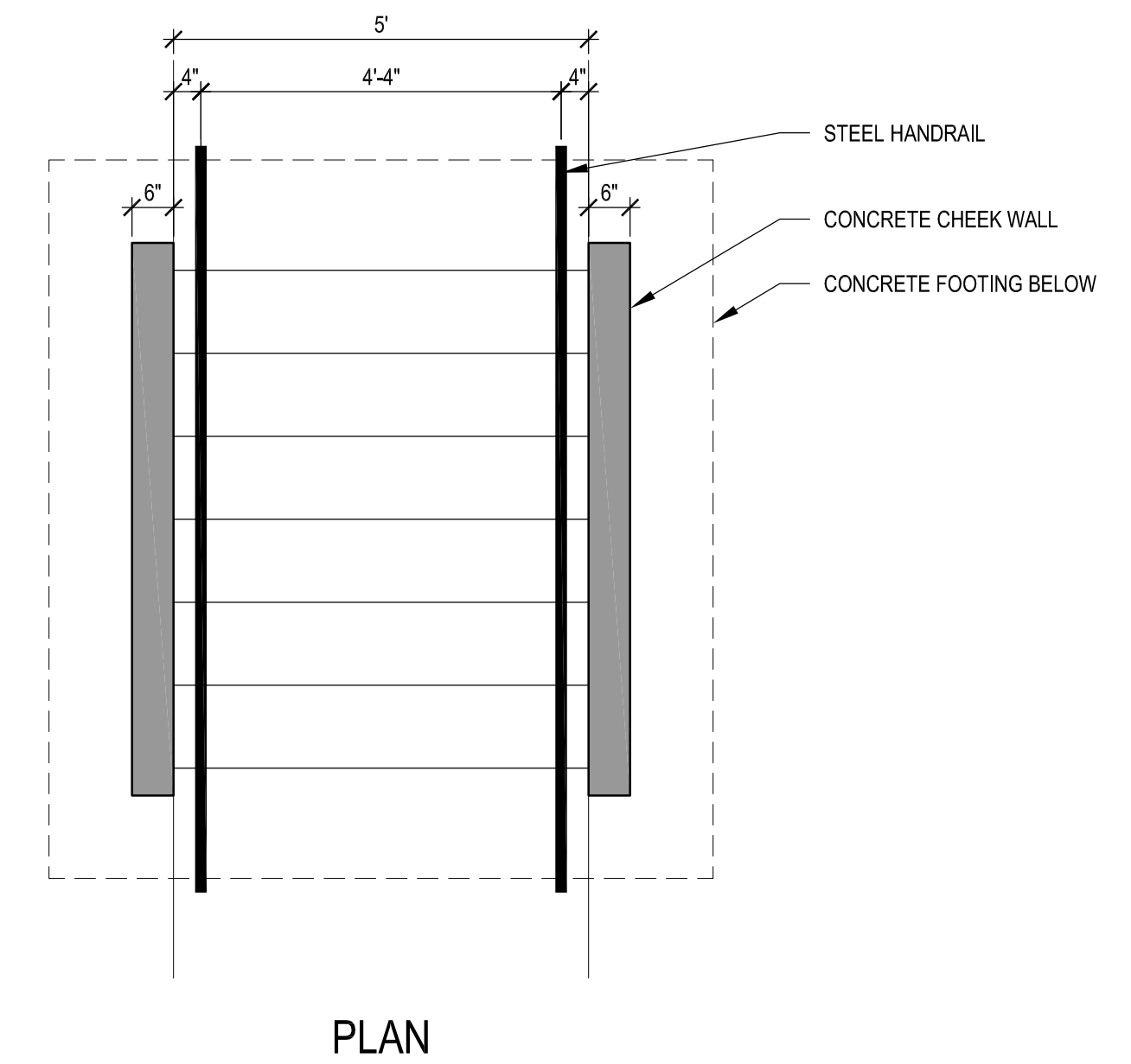
NOTE:
THIS DETAIL SHALL BE USED AT ALL LOCATIONS WHERE THE SIDEWALK ABUTS PLAY SURFACING



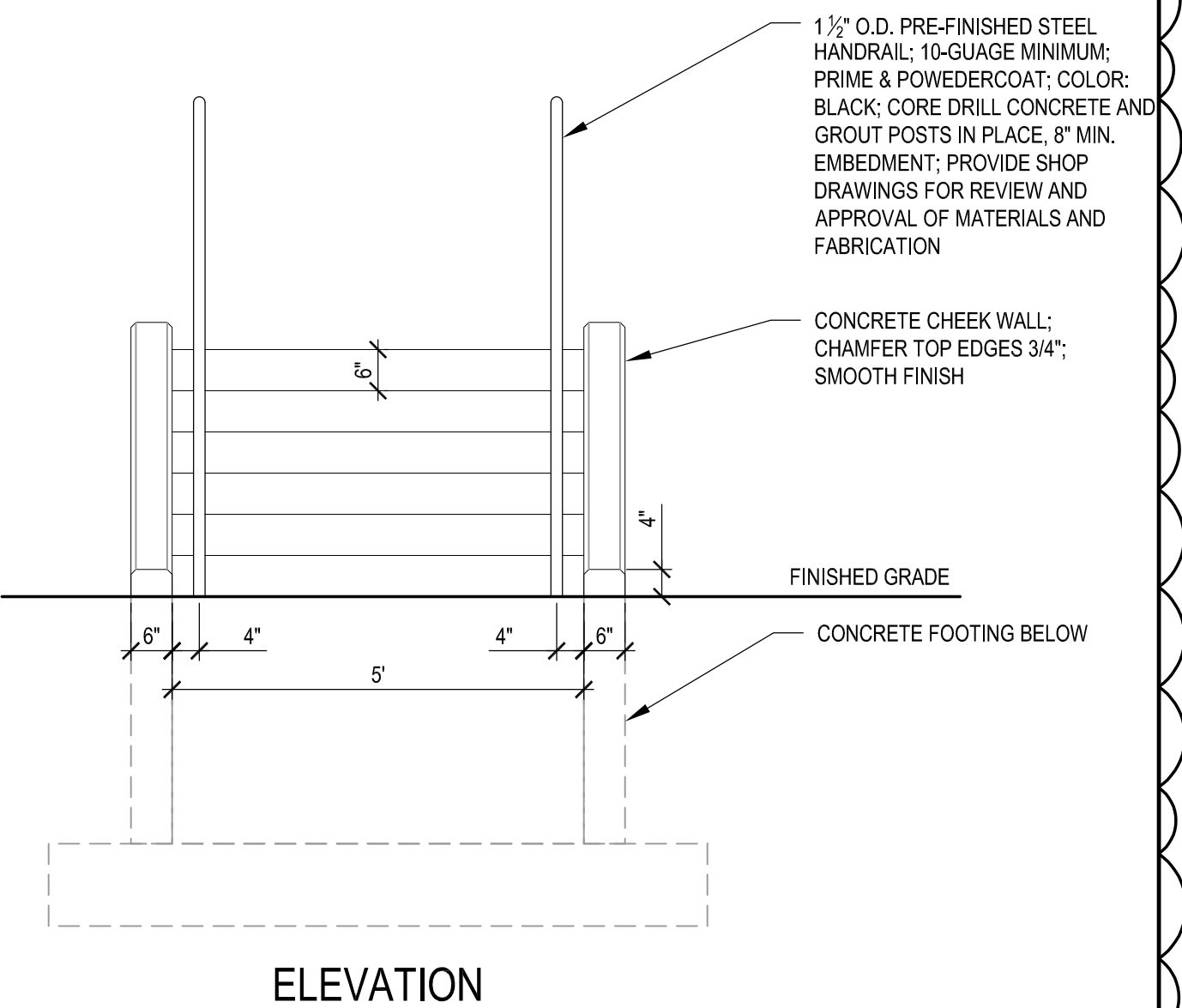
THICKENED CONCRETE EDGE 02
N.T.S.



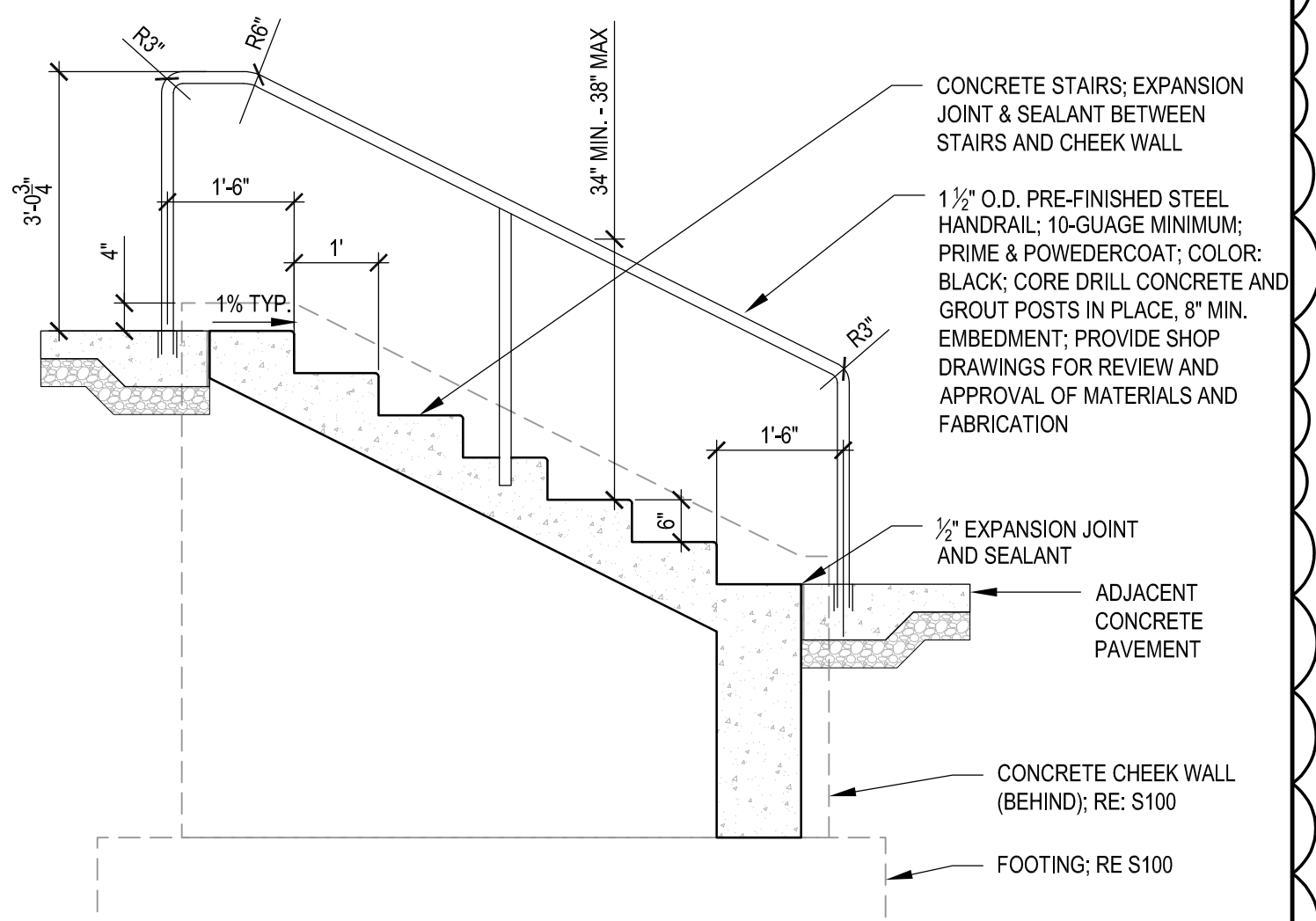
CONCRETE JOINTING 03
N.T.S.



PLAN



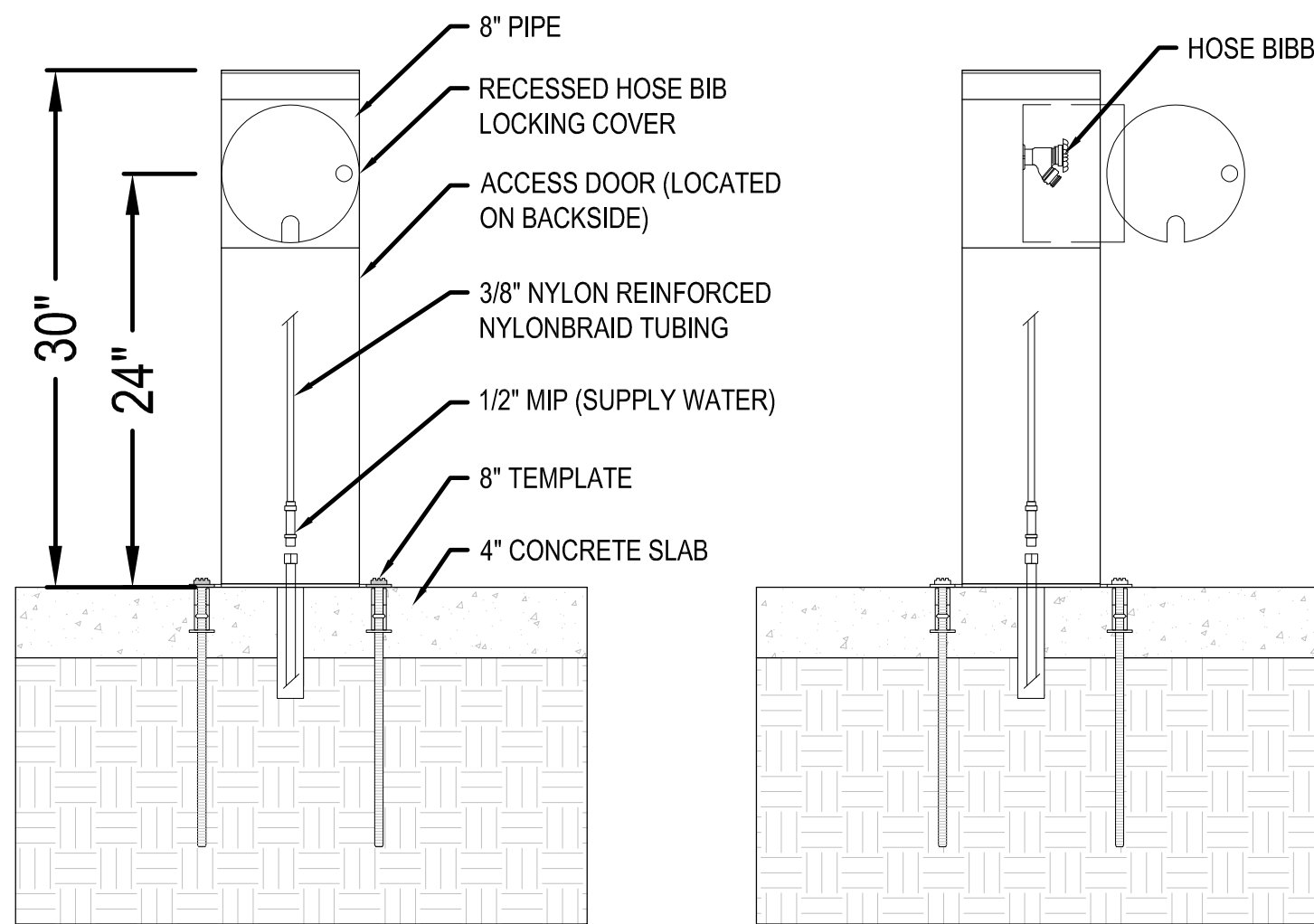
ELEVATION



SECTION



MOST DEPENDABLE FOUNTAINS, INC.
5705 COMMANDER DR. P.O. BOX 587
ARLINGTON, TN 38002-0587
PHONE: (901) 867-0039
www.mostdependable.com



FRONT VIEW

FRONT VIEW
RECESSED BIBB

NOTES:

1. INCLUDE 8" STAINLESS STEEL SURFACE CARRIER.
2. INSTALLATION TO BE COMPLETED IN ACCORDANCE WITH MANUFACTURER'S SPECIFICATIONS.
3. DO NOT SCALE DRAWING.
4. THIS DRAWING IS INTENDED FOR USE BY ARCHITECTS, ENGINEERS, CONTRACTORS, CONSULTANTS AND DESIGN PROFESSIONALS FOR PLANNING PURPOSES ONLY. THIS DRAWING MAY NOT BE USED FOR CONSTRUCTION.
5. ALL INFORMATION CONTAINED HEREIN WAS CURRENT AT THE TIME OF DEVELOPMENT BUT MUST BE REVIEWED AND APPROVED BY THE PRODUCT MANUFACTURER TO BE CONSIDERED ACCURATE.
6. CONTRACTOR'S NOTE: FOR PRODUCT AND COMPANY INFORMATION VISIT www.CADdetails.com/info AND ENTER REFERENCE NUMBER 3354-161.

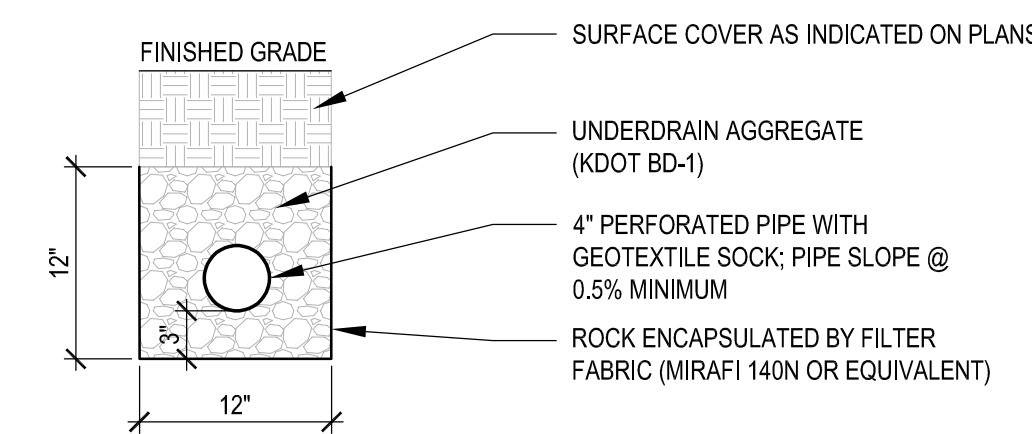


MODEL 24-8 SMSS
WITH RECESSED HOSE BIBB

L700 Site Details
PROTECTED BY COPYRIGHT ©2024 CADDETAILS.COM LTD.

REVISION DATE 08/14/2024
CADdetails.com

FROST FREE HYDRANT 05
N.T.S.



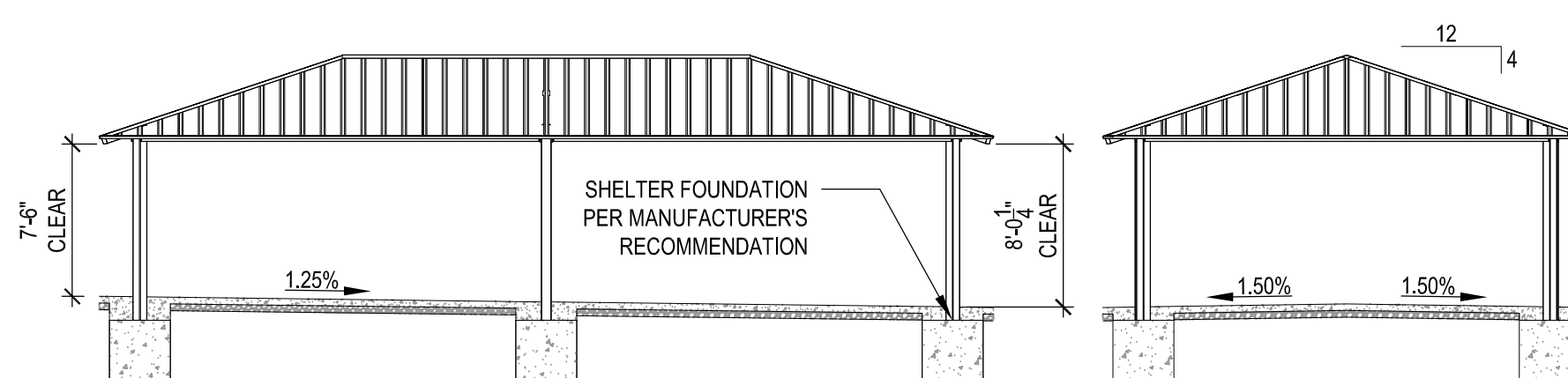
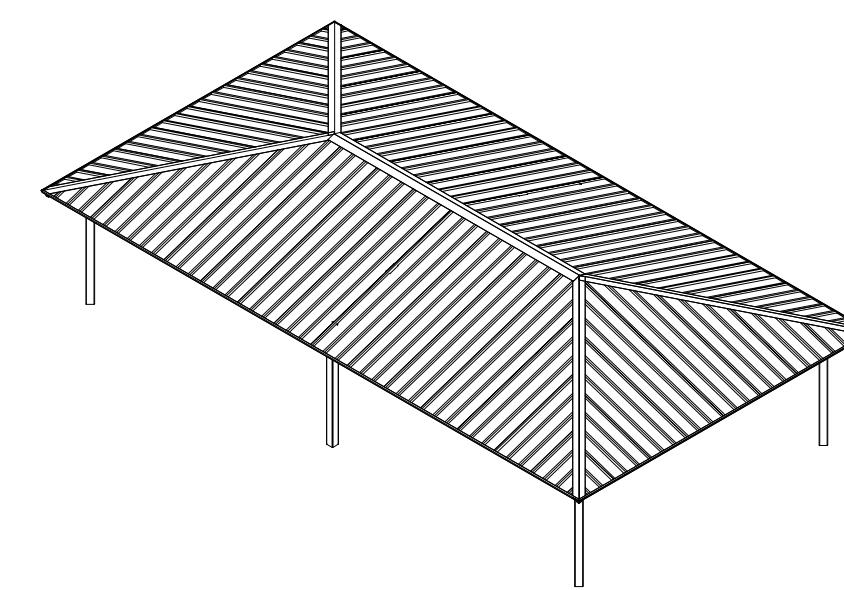
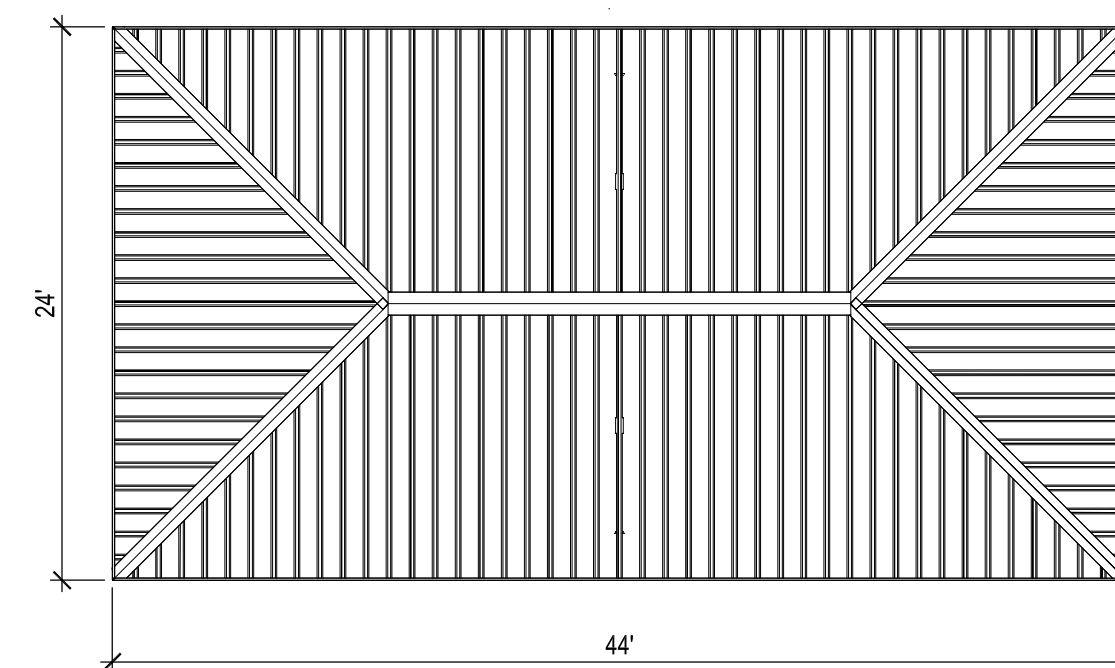
NOTES:

1. ALL UNDERDRAIN PIPES SHALL BE INSTALLED AT A MINIMUM SLOPE OF 0.5%.
2. PIPE SHALL BE INSTALLED WITH THE PERFORATIONS PLACED DOWN.
3. UNDERDRAIN PIPE SHALL BE PERFORATED CORRUGATED PIPE.
4. AT DAYLIGHT LOCATIONS, UNDERDRAIN OUTLETS SHALL INCLUDE A POP-UP TYPE OUTLET EMITTER.

UNDERDRAIN 04
N.T.S.

NOTES:

1. BASIS OF DESIGN: SHELTER AS PROVIDED BY: POLIGON 4240 136TH AVE. HOLLAND, MI 49424 T: 616.888.3500 WWW.POLIGON.COM OR APPROVED EQUAL
2. MODEL & SIZE: RAM Hip 24 x 44 MR
3. ROOF COLOR: 'REGAL BLUE'.
4. COLUMNS & BANDS: SQ. COLUMNS.
5. ELECTRICAL CUTOUTS: 2 CUTOUTS ON SEPARATE COLUMNS. FRAME COLOR: 'ASH GRAY'.
6. MANUFACTURER TO PROVIDE STAMPED AND SEALED DRAWING BY LICENSE ENGINEER IN THE STATE OF KANSAS. DRAWINGS SHALL INCLUDE FOOTINGS AND FOUNDATIONS.
7. ANCHOR BOLTING SHALL BE INTERNAL BELOW FINISHED GRADE OR AS RECOMMENDED BY MANUFACTURER.
8. CONCRETE PAD UNDER SHELTER IS NOT FLAT AND SLOPES IN MULTIPLE DIRECTIONS REFER TO GRADING PLAN SHEET L300.



PRE-ENGINEERED PICNIC SHELTER 06
N.T.S.

BOSTON DANIELS PARK IMPROVEMENTS

725 Quindaro, Kansas City, KS 66101



LAC# MO-2002023826 KS-59

414 Oak St. Suite 101 1111 N. 13th Street
Kansas City, Missouri 64106 Omaha, Nebraska 68102
P 816-756-6690 P 402-553-5485

www.BelVireo.com

ISSUE FOR BID

Revision Number	Description	Date
ADDENDUM 1		8/15/2024

4/24/2024 P-23055
Date Project Number

LR CP
Drawn By Checked By

File Name

SITE DETAILS

L500